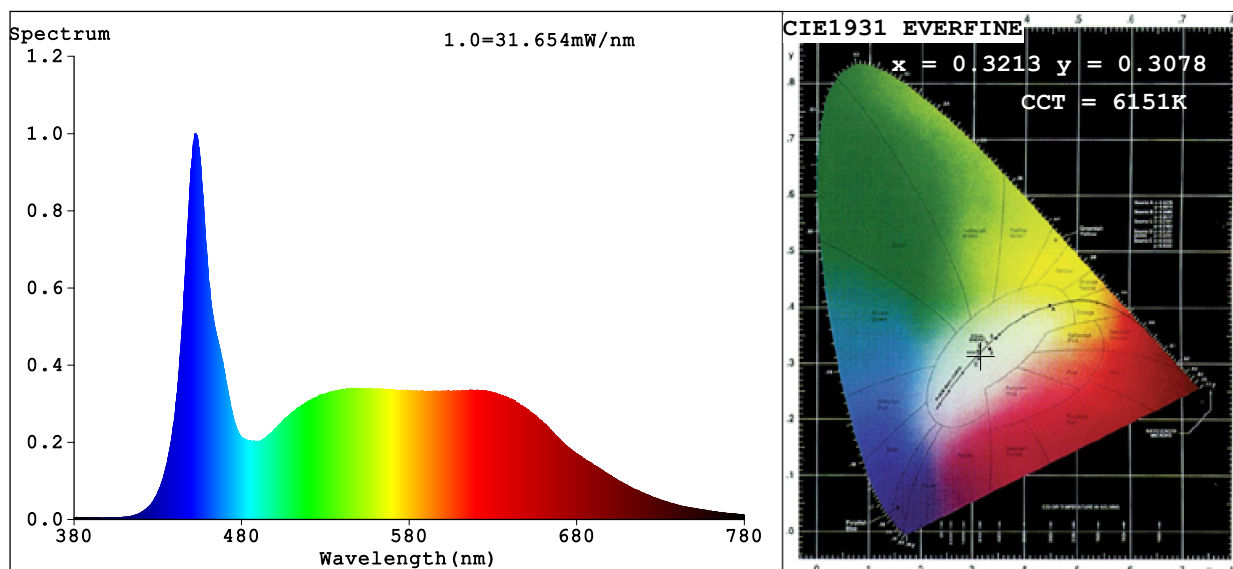


Spectrum Test Report



Color Parameters:

Chromaticity Coordinate: $x=0.3213$ $y=0.3078$ $u'=0.2124$ $v'=0.4578$

$CCT=6151K$ ($Duv=-0.0127$) Dominant WL: $L_d = -380.0nm$ Purity=7.7%

Ratio: R=17.5% G=76.2% B=6.3%; Peak WL: $L_p=452.5nm$ FWHM=19.5nm

Render Index: $R_a=93.5$ CRI=90.8 TM30: $R_f=86$ $R_g=105$

R1 =92 R2 =95 R3 =91 R4 =96 R5 =93 R6 =89 R7 =98

R8 =95 R9 =83 R10=92 R11=94 R12=68 R13=92 R14=94 R15=89

Photo Parameters:

Flux = 746.9 lm Eff. : 63.10 lm/W $F_e = 2.844$ W Scotopic:1715.3 S/P:2.2966

Electrical parameters:

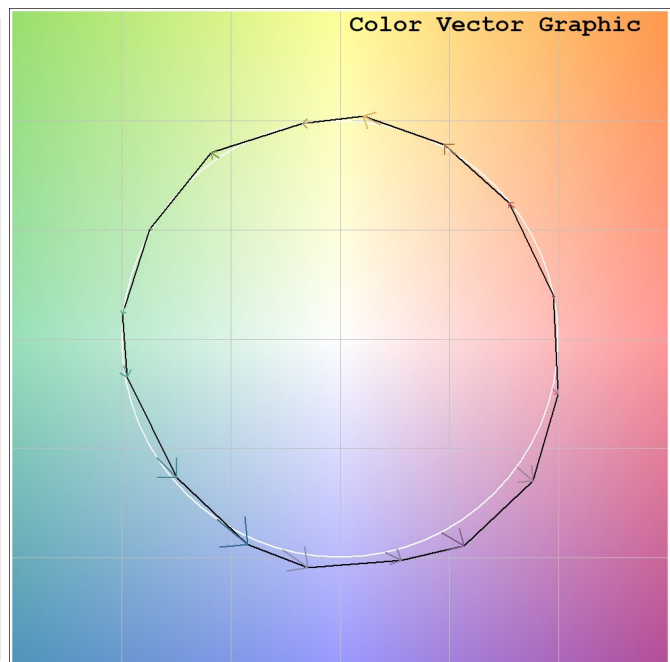
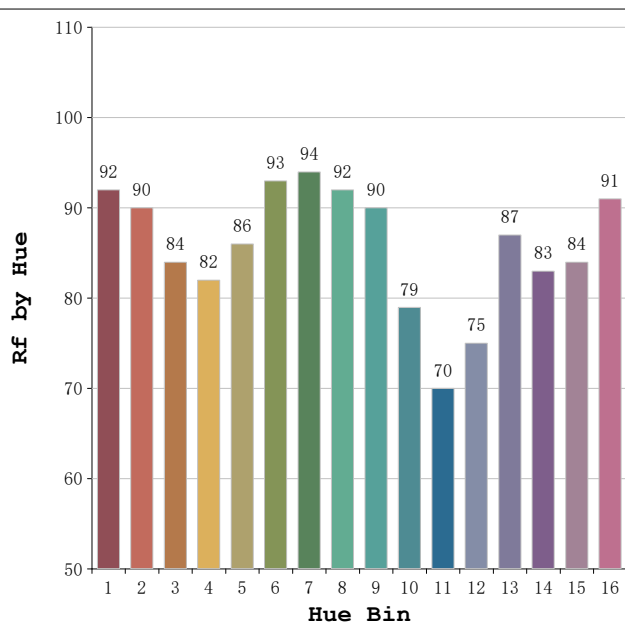
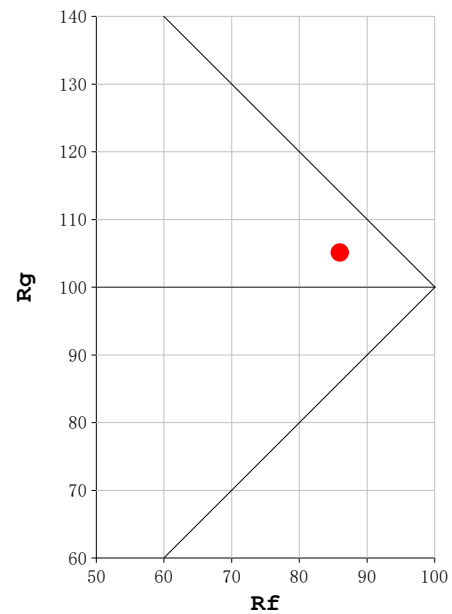
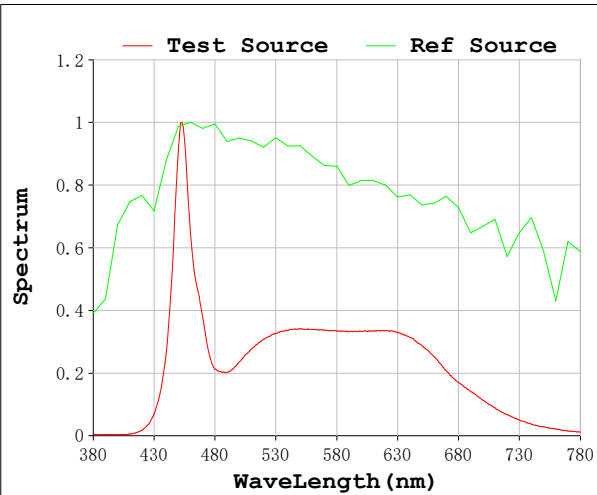
V = 23.998 V I = 0.4932 A P = 11.84 W PF = 1.000

Status: Integral T = 1000 ms $I_p = 42291$ (65%)

Model:Ecoled Cairo 6000K
Tester:Sergio Carneros
Temperature:27Deg
Manufacturer:Luz Negra S.L

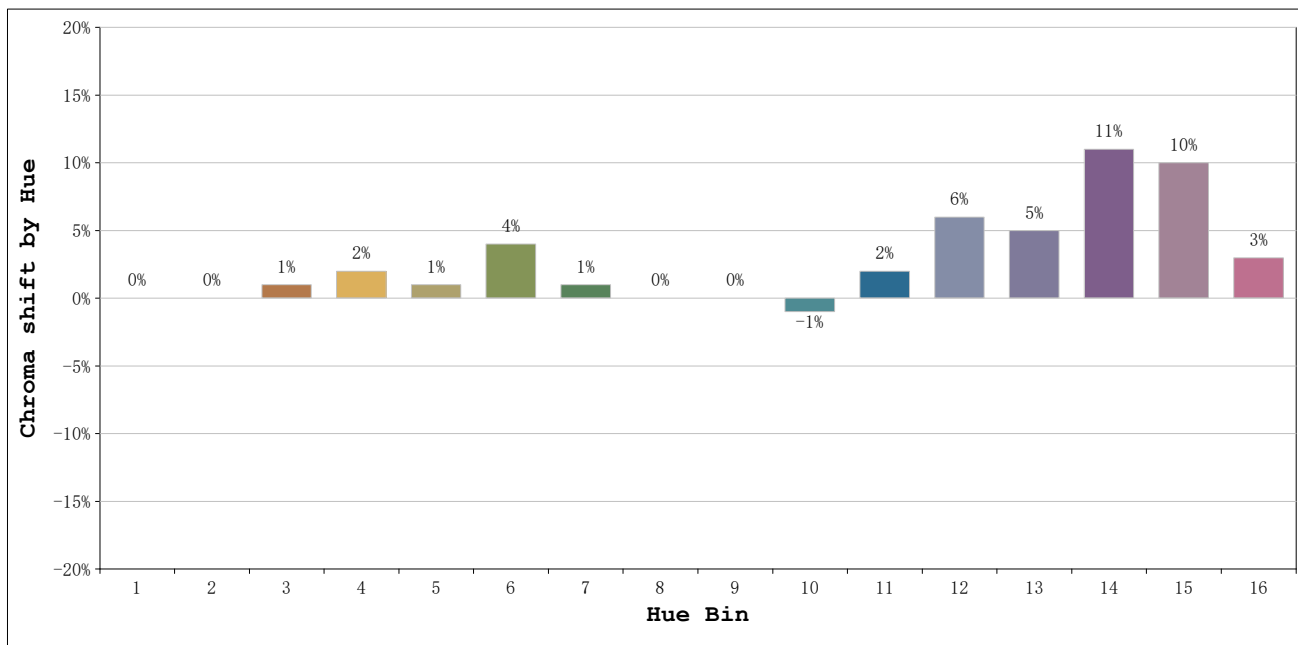
Number: 10.265
Date:2023-11-17 12:39:39
Humidity:40%
Remarks:100cm de néon

Rf: 86 **CCT: 6151 K** **u': 0.2124**
Rg: 105 **Duv: -0.0127** **v': 0.4578**



Model:Ecoled Cairo 6000K
 Tester:Sergio Carneros
 Temperature:27Deg
 Manufacturer:Luz Negra S.L

Number: 10.265
 Date:2023-11-17 12:39:39
 Humidity:40%
 Remarks:100cm de néon



			Graphic shift(%)	
Hue Bin	Hue Angle	Rf	Chroma	Hue
1	0.0° - 22.5°	92	0	1
2	22.5° - 45.0°	90	0	3
3	45.0° - 67.5°	84	1	7
4	67.5° - 90.0°	82	2	8
5	90.0° - 112.5°	86	1	5
6	112.5° - 135.0°	93	4	2
7	135.0° - 157.5°	94	1	1
8	157.5° - 180.0°	92	0	3
9	180.0° - 202.5°	90	0	5
10	202.5° - 225.0°	79	-1	13
11	225.0° - 247.5°	70	2	18
12	247.5° - 270.0°	75	6	13
13	270.0° - 292.5°	87	5	6
14	292.5° - 315.0°	83	11	5
15	315.0° - 337.5°	84	10	0
16	337.5° - 360.0°	91	3	-1

Model:Ecoled Cairo 6000K
 Tester:Sergio Carneros
 Temperature:27Deg
 Manufacturer:Luz Negra S.L

Number: 10.265
 Date:2023-11-17 12:39:39
 Humidity:40%
 Remarks:100cm de néon